

Homeowners Tips Sheets

Handrail Rules

Safety tips



**School of
Professional
Home Inspection**

This document is a
sample from the Home
Inspections
Fundamentals class

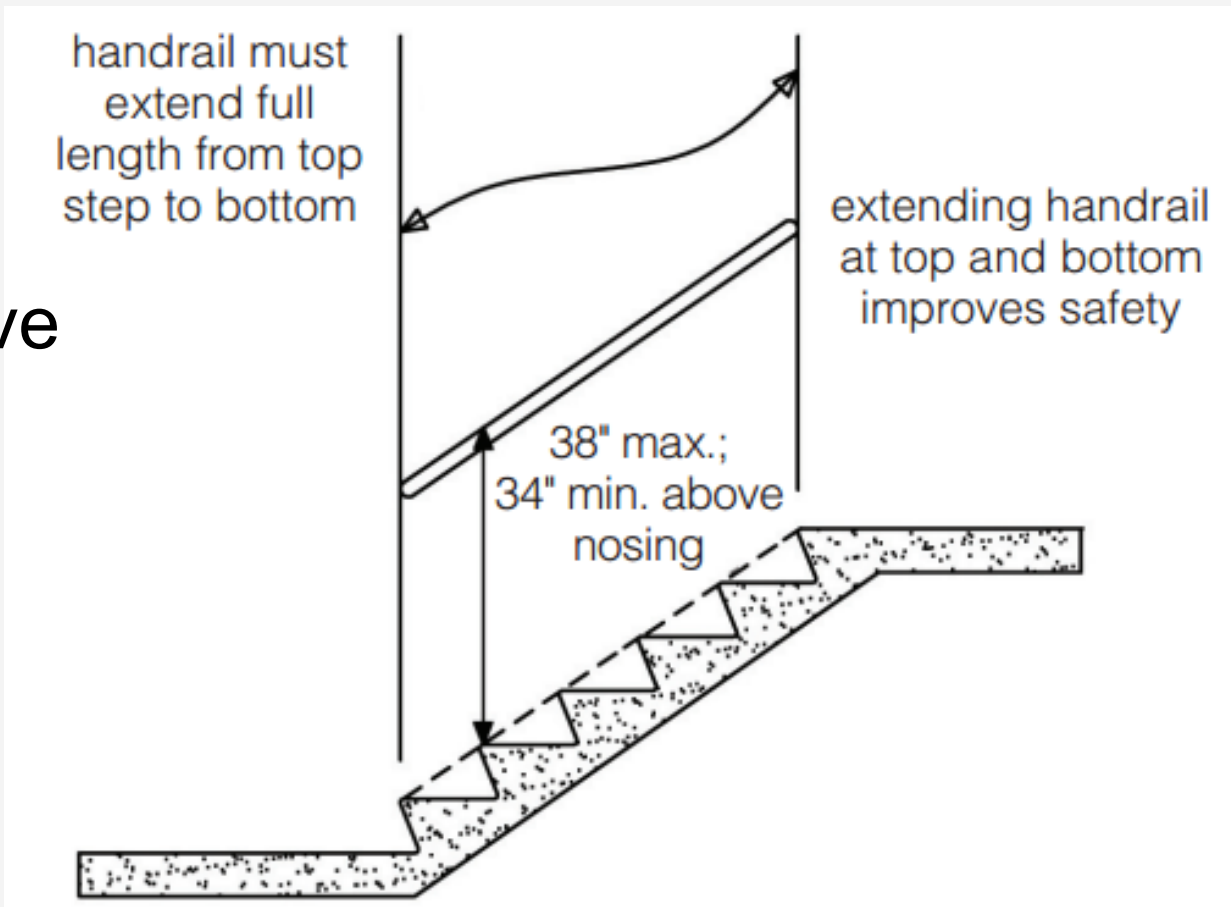
Learn more about
becoming a Licensed
Home Inspector at
Sophi.biz



Decks Stairs Porches & Railings

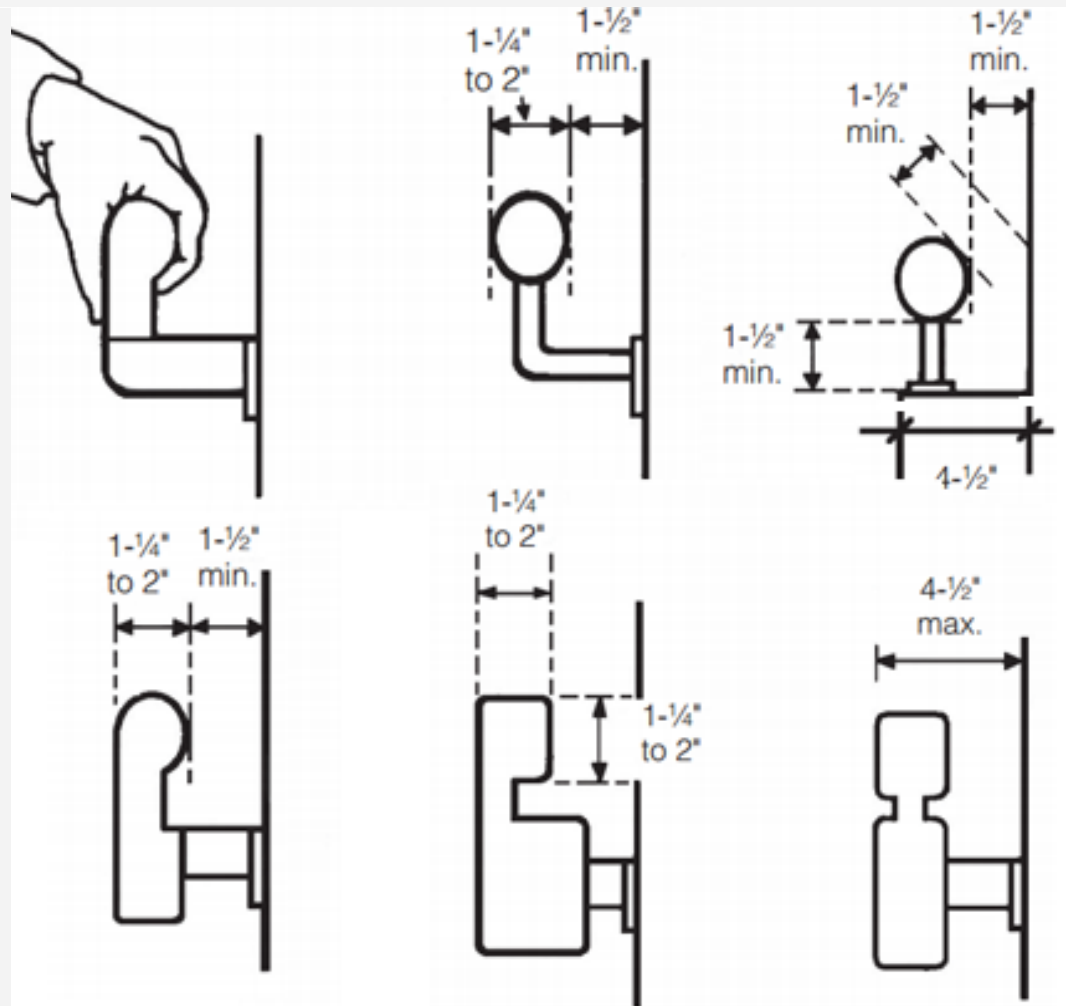
Handrails on a stairs should be **continuous**, approx 36" above the stair nose.

No obstructions allowed that prevent your hand from continuously holding the rail.



Graspable Railings

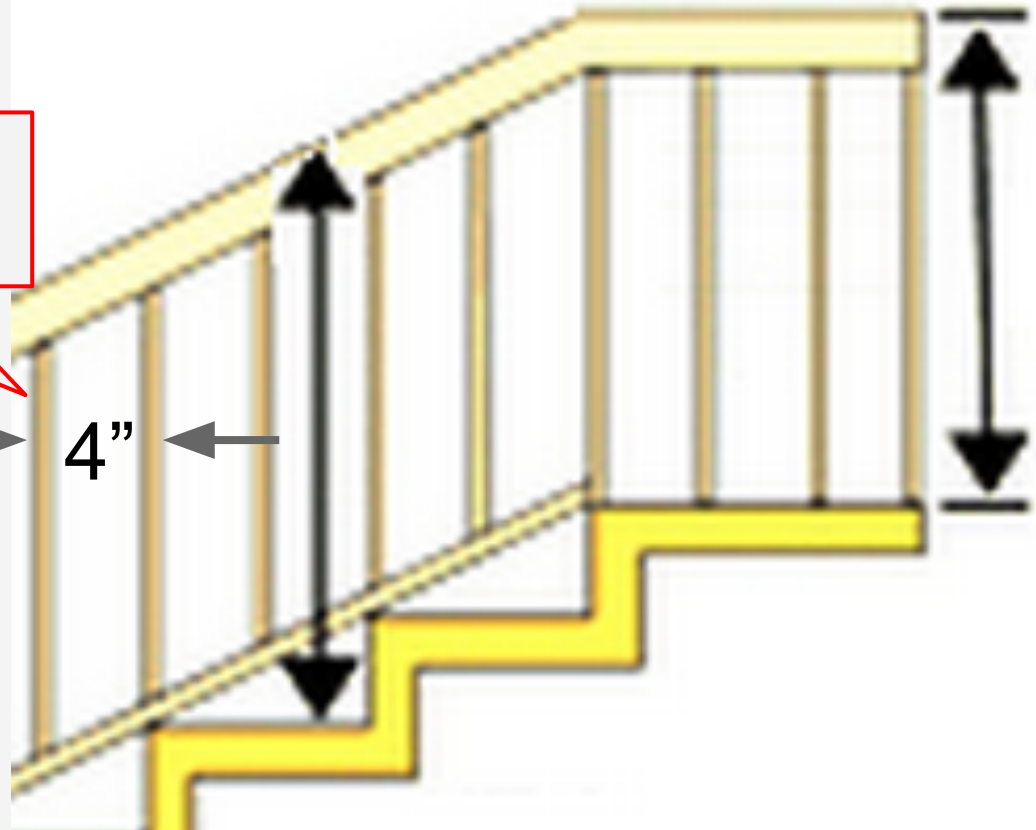
Handrails should be graspable, (< 2.5" wide) and a perimeter dimension between 4 and 6- $\frac{1}{4}$ inches



Railing heights

All balusters must
have gaps 4" or less

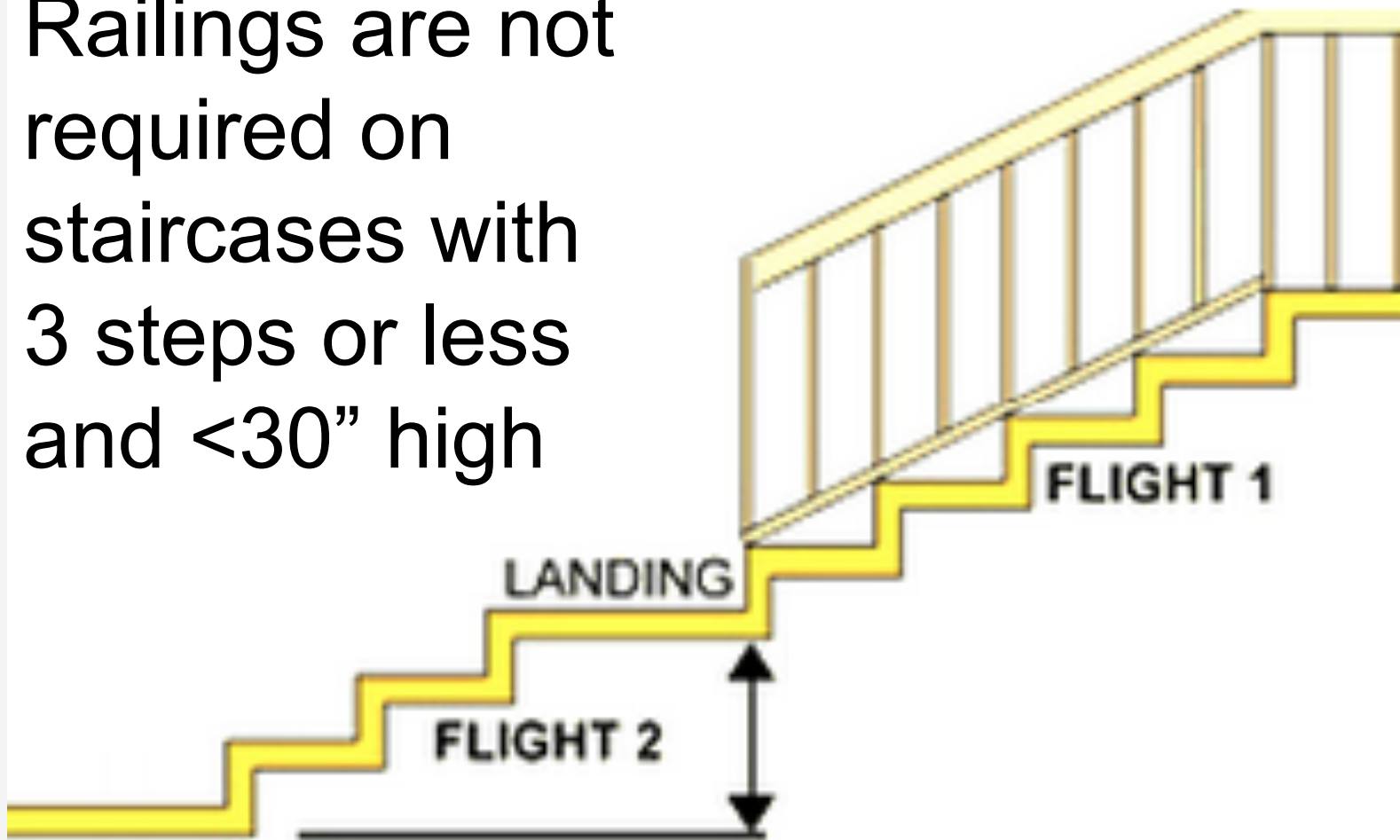
4"



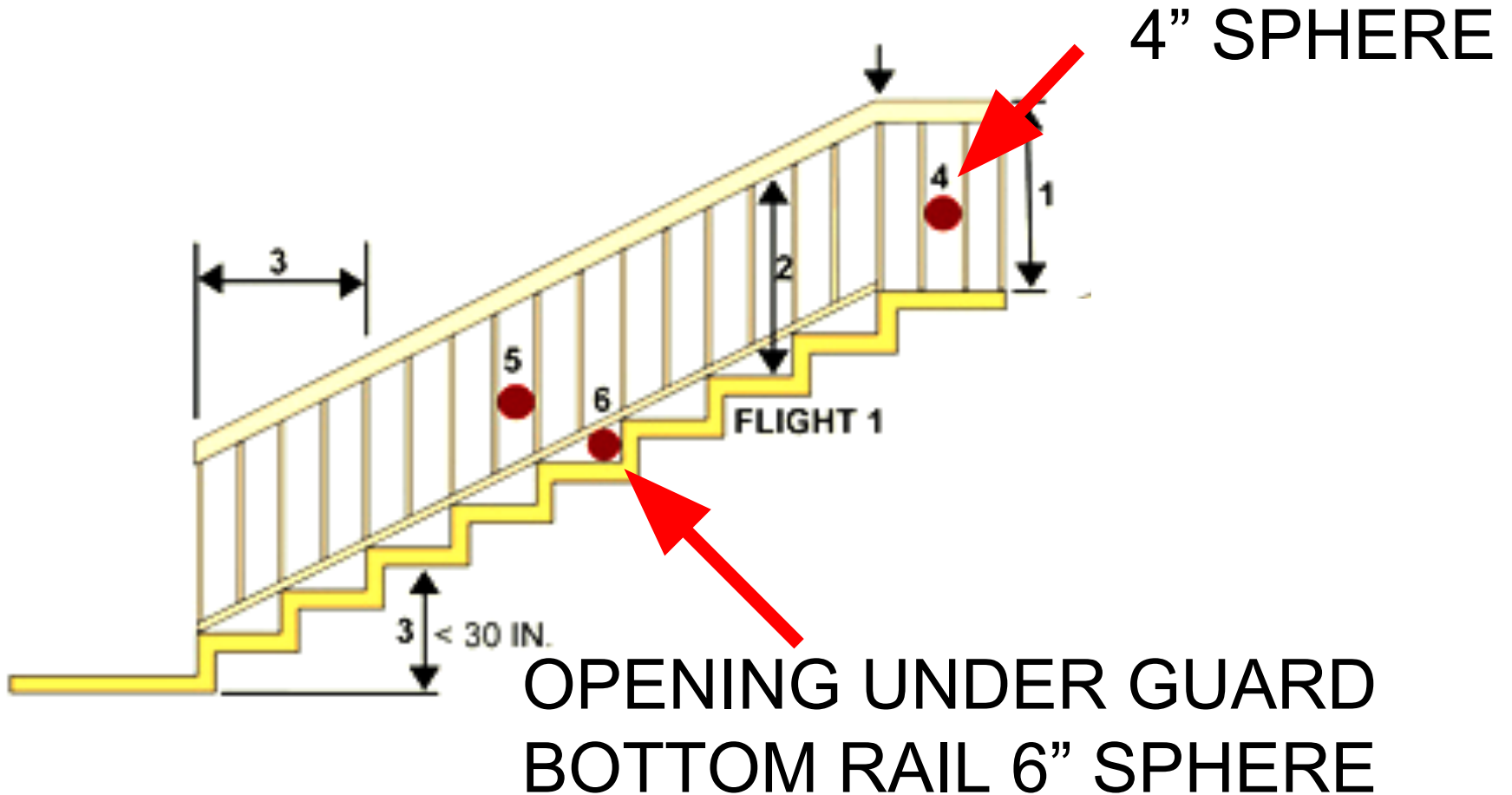
Guard rails should be 36" high

Stair Railing Requirements

Railings are not required on staircases with 3 steps or less and <30" high



Stair Railing Openings



Thank You

Learning today
Leading tomorrow



**School of
Professional
Home Inspection**

See more homeowner
tips and information on
becoming a Licensed
Home Inspector at

Sophi.biz